



# METEX NOOVISTA

Short overview

- 1. Executive summary**
- 2. Current proceedings**
- 3. The Metabolic Explorer Group**
- 4. The Noovista Company**
- 5. The Chemisis platform & the development agencies**
- 6. Contacts and Application process**

# Executive summary





Natural  
origin

Metex Noovista SAS is registered since 2018 and active under the 20.14 Z NAF code (basic organic chemicals). It is undergoing an insolvency process opened on March 25th, 2024.

It has a capacity to produce 5 ktpy of 100% biobased PDO (1,3 propanediol) and 1 ktpy 100% biobased BA (Butyric Acid).



Made  
in France

**First and only non-GMO & non palm PDO in the world.**

**Only PDO plant in Europe**

**Lowest Carbon PDO with -64% Co2 emission vs conventional diols**

**Unique co-production of high quality and traceability biobased BA**



Low carbon  
footprint



Traceability and  
transparency

Operates a unique technology based on fermentation using renewable feedstock (crude glycerine) in a bioconversion with low environmental footprint.

State of the art plant built in 2019-2020 and started in 2021

Stabilised process since 2022.



High  
performance



Circular  
process

Operating from a hosting platform perfectly located in the hearth of Europe.

# Current insolvency proceedings



- **March 12th, 2024: filling for insolvency for all group: Mother company (Metex) and two industrial sister companies (Noovista and Noovistago).**
- **March 25th: opening hearing, Tribunal de Commerce de Paris.**
- **April 30th: deadline for candidating for taking over Noovista. Offers have to be sent to the Judicial Administrators (Maîtres Joanna Rousselet, Carole Martinez and Marine Pace, contact last page).**
- **Candidates can contact the Judicial Administrators anytime in order to have access to the data room as well as to details regarding the process.**

**The  
METABOLIC  
EXPLORER  
Group.**




# METEX IS THE INGREDIENT FOR CHANGE

RENEWABLE  
CARBON SOURCED

FERMENTATION

PURIFICATION

HIGH QUALITY  
BIOBASED INGREDIENT



As the European leader in the production of biobased functional ingredients by fermentation, we produce components that are essential to the manufacture of everyday products, helping to build a more circular and sustainable industry by reducing the carbon footprint of consumer goods and contributing to limiting climate change.

Thanks to our 25 years of proven expertise, ranging from innovation to industrial production, we provide the cosmetics, functional fluids, biomaterials and animal nutrition industries with practical solutions for more natural, less carbon intensive products that deliver performance.



# The Group



## METEX, IN FIGURES



**> 100 kt**  
production capacity



**450+**  
employees



**400+**  
patents filed

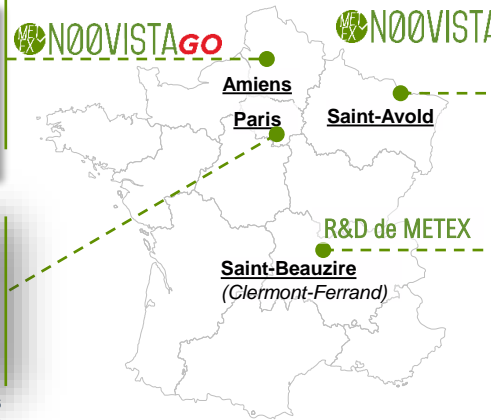


Addressing three markets:  
animal nutrition,  
cosmetics and  
biopolymers

Unique in Europe and historical bioproduction facility taken over in April 2021.



Sales, Aftersales and support teams (regulatory monitoring, legal,...)



First biosourced PDO production site in Europe based on proprietary technology and own engineering.



European pioneer for R&D, scale-up, pilot and continuous improvement of fermentation technologies.

The METEX group is structured around 4 skills centers and complementary assets from innovation to customer care.

**METEX Noovista  
SAS  
Carling (Lorraine)**



# A pioneer in industrial biotechnology, with high technical & environmental management expertise, and highly differentiative products



- Fermentation and purification continuous 24h/24 production : 5,000 tons of PDO and 1,000 tons of AB per year
- Wastewater treatment plant : energy recovery (biogas) and 1 co-product and fertiliser
- Cosmetic & technical grade with full tracability and high quality standards (expert sensory panel)
- Certified site ISO 9001, ISO 14 001, ISO 45001, ISO 22000 and Halal



- Only European PDO supplier
- Only no-GMOs and no-palm PDO supplier worldwide
- Only BA supplier for animal nutrition from natural origin
- The lowest Carbon PDO worldwide



- 52 direct jobs and 120 indirect jobs
- Continuous Production 7 days per week organized in 5 shifts
- Continuous improvement mindset

Built with the support of



**bpifrance**

Centre industriel Agg. Grand Est  
Saint-Avald Synergie



**Grand Est**  
Région Grand Est



AGENCE  
DE L'EAU  
Grand Est

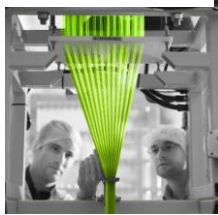


Banque  
européenne  
d'investissement



# Two biosourced products to address a wide range of markets

**METEX**  
Propanediol



**BIOPOLYMERS**

High quality ingredients as building block or chain extender for innovative products

Production of polyesters, polyurethanes, coatings, adhesive, sealants, elastomers, and many more...



Natural origin

**METEX**  
Propanediol



**COSMETICS, FLAVORS & FRAGRANCES, FUNCTIONAL FLUIDS**

High quality & high purity ingredients for innovative & performant formulations

Home and Personal Care, technical fluids, Heat Transfer Fluids, use as solvent, etc



Low carbon footprint



High performance



Circular process



Made in France

**METEX**  
Butyric Acid



**b-noov**



**ANIMAL NUTRITION**

High quality & biosourced Butyrate for Animal Feed

Nutritional & Health animal feed ingredient

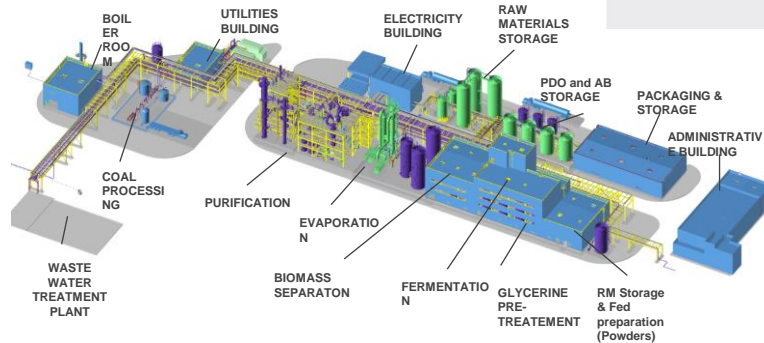


Traceability and transparency

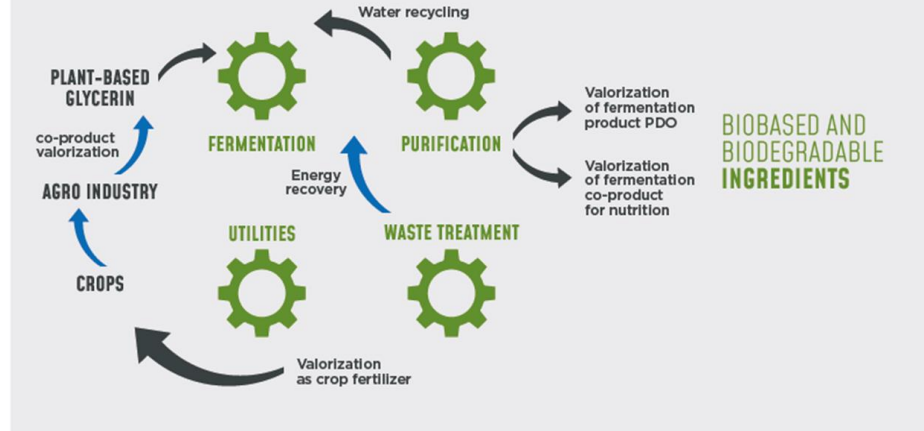
# METEX PROPANEDIOL: A VIRTUOUS MANUFACTURING CIRCLE

## An eco-designed process...

- Biotech process with high conversion rates
- Vegetal origin Raw Material
- On-site Biogas production from wastes
- Water recovery
- Valorisation of waste by-product as fertilizer
- More than 96% of outcoming streams valorised



## A ROBUST AND CIRCULAR FERMENTATION PLANT



BIODEGRADABLE  
INGREDIENTS

## ...for sustainable products

- 100% Biobased compounds
- Non food competing feedstock
- -64% CO<sub>2</sub> emission vs conventional diols
- PDO NSF certified for Food contact / BA Food grade
- Ecocert Detergence PDO
- Biodegradable compounds

## Central location and easy liaisons.

**The factory is hosted on the Chemesis chemical platform and ideally located in Saint-Avoid in the earth of Europe.**

- **Road accesses:**

- Alongside the A4, part of the E 50 (atlantic ocean to black sea), with direct access.
- Connected to the german BAB 8 over the N33 and BAB 620

- **International airports:**

- Luxemburg Findel, 108 KM,
- Frankfurt am Main, 198 KM,
- Bruxelles Zaventem, 314 KM,
- Paris Charles de Gaulle, 359 KM.

- **Railways:**

- Metz Gare (TGV): 45 KM,
- Saarbruck (ICE): 32 KM,

- **Suppliers within 300 KM distance.**

# Chemesis & the development Agencies



## Efficient and complete facility management.



### An “all inclusive” reception service via a one-stop shop:

- Dedicated support for the set-up,
- Provision of strategic information to support the construction of the BP,
- Organisation of tailored welcome tour.



### Legal and regulatory monitoring and support cell:

- Information, advice and support in compliance with environmental standards.



Serge CHOUFFEUR  
PMO

00 33 6 29 39 27 49.

[contact@plateforme-chemesis.com](mailto:contact@plateforme-chemesis.com)



### Premium services to support the set up and the operations:

- **Administrative support** for financing, hiring, communication.
- **Shared utilities:** steam, electricity, gas, waters, nitrogen, oxygen,
- **Shared services:** security and guarding, occupational health service, firefighting, logistics, catering, water treatment, rail operations, contractors village (over 100 local providers for all crafts).



## Moselle Attractivité.

Moselle Attractivité is the attractiveness agency of the Moselle territory. The economic development department of the agency is financed by the Grand Est Region and the EPCIs of Moselle.

In collaboration with local authorities and in permanent liaison with a network of partners (State services, Grand Est Region, EPCI, etc.), Moselle Attractivité provides, free of charge, a quality service to business leaders looking for a site or with development projects : analysis of needs, search for land and buildings, search for financial aid and industrial partners, etc.

<https://www.entreprendre.mosl.fr/en/setting-up-a-business-in-moselle/>



Louis EXERTIER  
Division Director

00 33 6.63.27.45.95.

[louis.exertier@moselle-attractivite.fr](mailto:louis.exertier@moselle-attractivite.fr)

Jean-Paul SCHMITT  
Project Manager "Support for  
companies".

00 33 6.61.35.56.57

[jean-paul.schmitt@moselle-attractivite.fr](mailto:jean-paul.schmitt@moselle-attractivite.fr)

## Invest Eastern France

Invest Eastern France is a service of the regional innovation and international prospecting agency “Grand E-nov +”, initiated and funded by the Grand Est Region. Invest Eastern France identifies and supports foreign companies with investment projects in Europe or in France, to bring economic, industrial and technological added value to Eastern France.

### **Our services**

The multilingual team of Invest Eastern France offers a package of free and confidential services. Invest Eastern France works in partnership with local economic development agencies as an entry point to provide you with comprehensive and relevant information and turnkey solutions for your investment projects.

**INVEST**  
EASTERN FRANCE

Harold LABESSE  
Investment Advisor

00 33 7 48 10 70 14.

[h.labesse@invest-easternfrance.com](mailto:h.labesse@invest-easternfrance.com)

# Contacts and Application process.

In direct contact with the  
Judicial Administrators



# Contacts and Application process

Candidates can contact the **Judicial Administrators** ('*Administrateurs judiciaires*'), Maîtres Joanna Rousselet, Carole Martinez and Marine Pace, **using the following email addresses:**

[joanna.rouselet@fajr.eu](mailto:joanna.rouselet@fajr.eu) – [josephine.bureau@fajr.eu](mailto:josephine.bureau@fajr.eu) – [c.martinez@aj-2m.com](mailto:c.martinez@aj-2m.com)  
[m.pace@aj-2m.com](mailto:m.pace@aj-2m.com)

After signature of an **NDA**, the Judicial Administrators will:

- (i) Grant access to the **data room**, and
- (ii) Provide a **process letter** specifying the terms of the expected offers as well as applicable French law provisions for the implementation of an **asset deal**.

Takeover offers are requested by **30 April 2024, at noon (CET)** and shall be sent to the Judicial Administrators (using the same email addresses as shown above).

Offers can be **improved up to two working days before the hearing** before the Commercial Court (expected by end of May 2024 - exact date to be determined).



*Plateforme Chemesis, Route de Carling, 57501 Saint-Avold cedex*

contact@metex-noovista.com [www.metex-noovista.fr](http://www.metex-noovista.fr)

[www.metabolic-explorer.fr](http://www.metabolic-explorer.fr)

**ABITBOL &**  
ADMINISTRATEURS JUDICIAIRES  
**ROUSSELET**

**Maître Joanna Rousselet**  
Administrateur Judiciaire  
38, avenue Hoche  
75008 Paris

[joanna.rousselet@fajr.eu](mailto:joanna.rousselet@fajr.eu) – [josephine.bureau@fajr.eu](mailto:josephine.bureau@fajr.eu)

**2M&associés**  
ADMINISTRATEURS  
JUDICIAIRES

**Maîtres Carole Martinez & Marine Pace**  
Administrateurs Judiciaires  
22, rue de l'Arcade  
75008 Paris

[c.martinez@aj-2m.com](mailto:c.martinez@aj-2m.com) – [m.pace@aj-2m.com](mailto:m.pace@aj-2m.com)